

How to Identify Bush Crickets

Did you know?

A cricket's antenna is 'long & whippy'. It is longer than the body.



Roesel's Bush Cricket

Short winged, cream line around side of pronotum. 3 cream dots behind pronotum.

Did you know?



Females have an ovipositor which they use to lay their eggs.

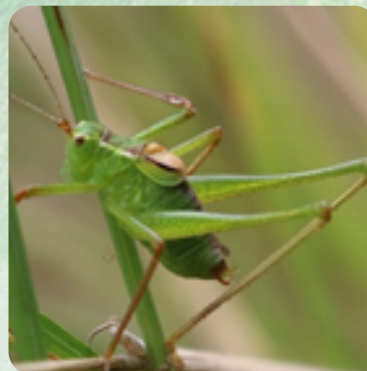


Long Winged Conehead

Body is green, slim and pencil shaped. Wings are brown. They are longer than the body.

Did you know?

The pronotum is the name of the shoulder saddle. The shape is used as one of the identification keys.



Speckled Bush Cricket

Very short wings.

Green stocky body with tiny black speckles.

How to Identify Groundhoppers



Slender Groundhopper

Small stocky with wings past its knees. Mainly brown and sometimes has a pattern across its shoulders.

How to Identify Grasshoppers

Did you know?

A grasshoppers antenna is 'short & stout' It is shorter than the body.



Meadow Grasshopper

Female is short winged and larger. Male is long winged.

Lines on the pronotum are slightly curved inwards. Dark hind knees.



Field Grasshopper

pronounced pinch in of lines on pronotum.

Rear of pronotum is pale.
Long winged.
Female is larger than male.



Lesser Marsh Grasshopper

Pronotum lines are parallel or almost so.

Female is larger than the male.

Long winged.

Subdued colours.



Did you know?

Each species of bush cricket & grasshopper make distinctive sounds, these are called stridulations. You can learn these sounds & use them to identify each species.

