

# Project Parklife!

The Parks Trust  
MILTON KEYNES

Your school, and most likely your home is in a pretty unique place. Milton Keynes has many fantastic features including over 6,000 acres of greenspace. The Parks Trust is the independent charity that cares for the parks and grassland across Milton Keynes.

This project will help you to find out more about your local Parks Trust parks and give you an opportunity to use a range of skills to explore the features within them.



Visit [www.theparkstrust.com](http://www.theparkstrust.com) to find out which of The Park Trust's parks is closest to a) your house b) your school. For each one find out what the key features of the park are.

You might want to visit these parks and include some photos and a description of each one.

## 1. Identify 3 different types of tree in the park.

You can find a tree identification sheet here to help you [www.theparkstrust.com/get-involved/outdoor-learning/free-activities-and-resources](http://www.theparkstrust.com/get-involved/outdoor-learning/free-activities-and-resources)



For these activities, get outside and visit a park near you.

Depending on where you live, it might be one of The Parks Trust's greenspaces. Look out for signs that tell you who manages the land.

## 2. Describe the location of each of your chosen trees.

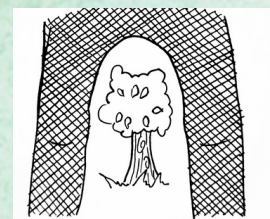
- Are they near water? What might that tell us?
- Are they growing on their own or in a cluster? What might that tell us?
- Have they been planted to mark a specific feature e.g. the entrance to the park?

## 3. Get to know one of the trees

- Get up close and study the tree.
  - What can you see?
  - How does it feel?
- Can you estimate how old the tree is?
  - What features of the tree and the surrounding area would help you with this?
- Can you estimate how tall the tree is?
  - Use your trigonometry skills.
  - How you could apply Pythagoras' theorem to do this.



Bend over and look at the tree through your legs. Walk away from the tree until the whole tree is framed by your legs. Now measure from the base of the tree to where you are standing.



- How does this tree fit into the ecosystem of the local area?
  - Is there any evidence of wildlife creating a habitat in the tree?
  - Would the tree provide a food source for any wildlife?

# Challenge



Create a leaflet for people who want to visit The Parks Trust parks. You could focus on one specific park or The Parks Trust's land in general.



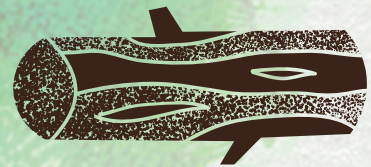
Things to include

- What facilities are there e.g. café, toilets, accessibility
- What can visitors see e.g. wildlife, artwork
- Reminders to protect the environment e.g. litter, dogs on leads



*Remember bright colours and images will make your leaflet stand out.*

# Extension challenge



Design a new park for The Parks Trust in Milton Keynes. As Milton Keynes continues to grow, The Parks Trust have more land to manage. What things would you like to see included in these new parks?

You could make a map of your new park, create a 3D model or share your ideas in a different way.



*Don't forget to give your park a name and remember that it needs to be suitable for visitors of all ages!*

*Don't forget to share your creations with us @theparkstrust*

